



# Customer Case Study

## TECT Corporation - Newington, CT

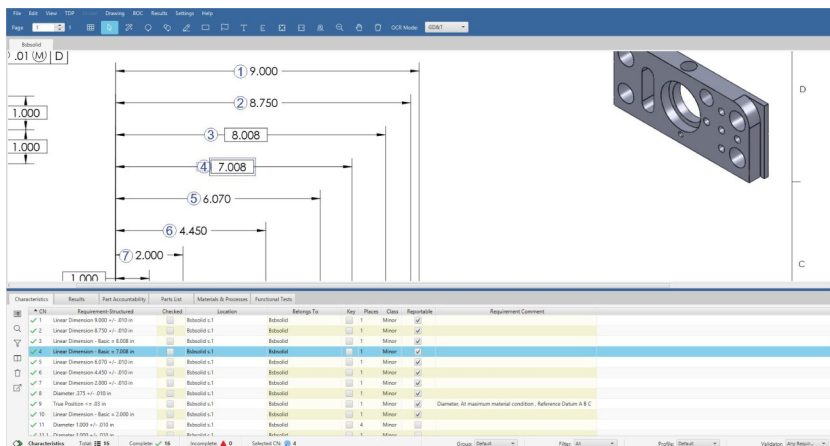
TECT Corporation ([www.tectcorp.com](http://www.tectcorp.com)) is one of the largest non-OEM manufacturers of static and rotating components and assemblies for the aerospace industry. TECT customers include the major engine and airframe manufacturers. TECT has an increasing portfolio of corporate-wide systems for desktop application delivery and other IT services, ERP, payroll, sales, and quality infrastructure. The TECT Newington location is a plant of over 380,000 square feet delivering complex parts around the world.



In 2006, TECT began a project to improve the approach for complying with AS9102 First Article Inspections. One major concern was finding a tool to manage the electronic drawings and specifications so the data could be integrated with a future ERP system and on the web. After performing an evaluation of competing tools, TECT selected DISCUS and purchased multiple licenses through a successful DISCUS integrator, Renaissance Services.

TECT uses DISCUS to electronically balloon TIFF files and PDF documents to create AS9102 dimensional reports in Microsoft Excel with the corresponding drawings as ballooned PDF documents. DISCUS has streamlined the TECT business processes and provided immediate cost savings.

TECT Manufacturing now doesn't have to wait for Quality to complete all of the necessary paperwork; it's done within hours of receiving a completed process from Engineering. The ability to reuse AS9102-compliant data within a structured, yet flexible tool allows TECT to adapt the information to match their needs. The bottom line: DISCUS provided immediate benefits.



*DISCUS has shortened cycle times to hours from days resulting in labor savings that paid for DISCUS the first time it was used.*